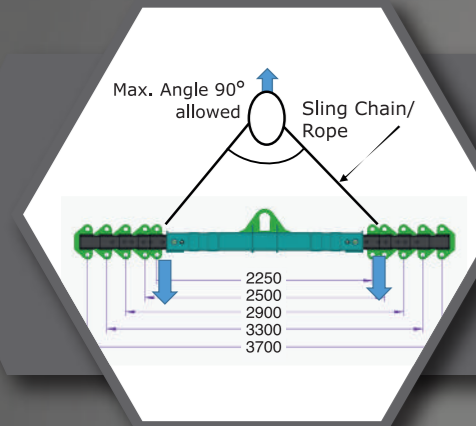


## ACCESSORIES



### SPREADER BAR CUM LIFTING BEAM

Spreader Bar is used to aid crane operators in picking up large and sometimes heavy loads. It increase the stability and handling of load during hoisting and traveling with load.

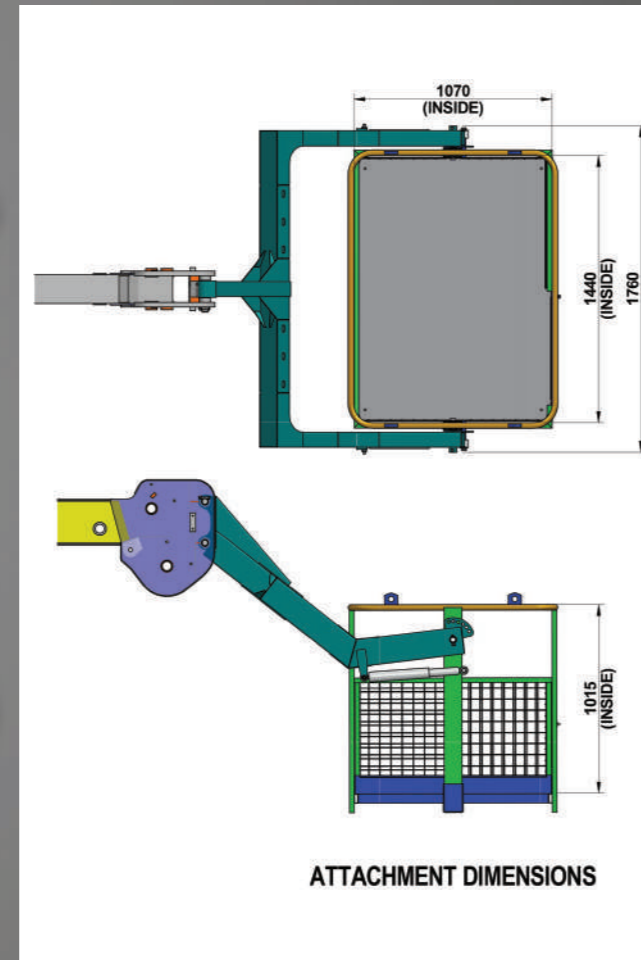
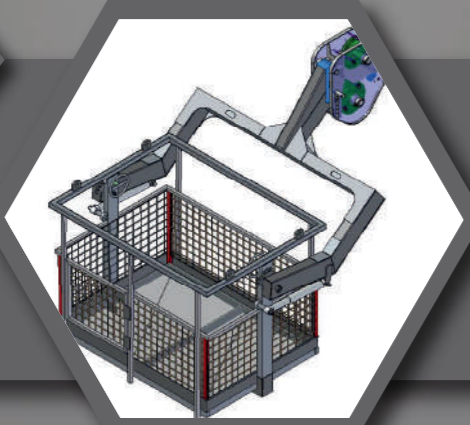
Lifting Capacity- 2.5 Tonnes to 15 Tonnes (depending on the crane load chart)  
Beam Expend Range: 2250 mm to 3700 mm

Note: Attachment view is for ref. only. Physical part may be differ from provided.

### MAN CARRYING BASKET

ATTACHMENT SPECIFICATION		
ATTACHMENT WEIGHT	KG	240
MAX. CAPACITY	KG	235
NO. OF PERSONS.	N <sup>o</sup>	2
PLATFORM LENGTH	mm	1440
PLATFORM WIDTH	mm	1070

**Intended use**  
The machine has been designed to lift people and handle small tool, max load 235 kg or 2 persons



ATTACHMENT DIMENSIONS

## SUPPORT NETWORK

### Experience Our Mobile Service Van For Fast And Reliable Solutions



#### ADDRESS:

**North Zone**  
ESCORTS LTD. - CONSTRUCTION EQUIPMENT  
4<sup>th</sup> Floor 409, Jasola Vihar,  
Elegance Tower, Near Apollo Metro Station,  
New Delhi – 110019

**East Zone**  
ESCORTS LTD. - CONSTRUCTION EQUIPMENT  
Eco Centre, Ambuja Neotia,  
609, 6<sup>th</sup> Floor, EM Block,  
Salt Lake Sector-V, Kolkata – 700091

**West Zone**  
ESCORTS LTD. - CONSTRUCTION EQUIPMENT UNIT 1,  
3<sup>rd</sup> Floor, A-Wing, Times Sqaure,  
Andheri - Kurla Road, Opp. Mittal Industrial Estate,  
Andheri (East), Mumbai – 400059

**South Zone**  
ESCORTS LTD. - CONSTRUCTION EQUIPMENT  
Subham Square, 1<sup>st</sup> Floor, S.No.41/9, 1<sup>st</sup> Main Road,  
Karambakkam, Porur, Chennai – 600116.

## WHEN YOU NEED EXTRA F 2022



Image not printable

Capacity 20 T | Boom Height with Fly Jib 21.8 M | Snatch Block 15 T Lifting  
Creep Speed 1.3 kmph | Axle Heavy Duty



#### BE CAREFUL!

When in the firm the same machine is to be used by more than one operator, working instructions as well as the use and maintenance manual must be conveyed to all the operators in charge of the machine.



Customer Support No.:  
**1800 180 4488**  
(Timings: 9.30 am - 6.00 pm, Monday to Friday)

E-mail:  
[ece.marketing@escorts.co.in](mailto:ece.marketing@escorts.co.in)

Escorts Construction Equipment: Plot No. 219, Sector-58, Ballabhgarh- 121004, Faridabad, Haryana (INDIA)  
Tel.: 0129-2306574/2306598/2306571 Fax: 0129-2306572 Website: [www.escortsgroup.com](http://www.escortsgroup.com)



GET IT ON  
Google Play  
Download Customer App  
for more details



Authorised Dealer

# ESCORTS WHITE LINE

MKT/21\_1/2022

## SPECIFICATIONS

### RATED CAPACITY

20 Tonnes at 1.5 m radius  
900 kg at 16 m radius  
Max Height 19.5 m  
SWL based on 85% stability & strength (IS 4573)

### ENGINE (BS IV)

Volvo - Eicher make CEV BS IV Diesel Engine, Model E494TC1 - High Pressure Common Rail System (HPCR) Technology, Turbo Charged Water Cooled, ECU Control Engine Management System, Developing 74 Kw/101HP @ 2200 RPM or Equivalent Engine.

### TRANSMISSION & CLUTCH

Engine is coupled with Synchromesh Transmission Gear Box and Auxiliary Gear Box with high/low & 2WD/4WD mode selector  
Clutch Single, dry type friction clutch plate (self adjusting)  
Clutch Actuation Pneumatic Assisted Hydraulic clutch  
Speeds 10 forward and 2 reverse  
Gradeability 40% unladen

### STEERING

Full power orbitrol with twin hydraulic double acting rams  
40° articulation on either side

### VEHICLE PERFORMANCE

Speed Max 40 kmph  
Creep Speed 1.3 kmph

### DRIVE

2 Wheel Drive optional, 4 Wheel Drive (Standard)

### AXLES

Front Heavy duty rigidly mounted front wheel drive axle  
Rear Mounted with semi-elliptical springs  
Make TATA

### BRAKES

Service Brakes Fully air operated brakes on front and rear wheels.  
Parking Air operated, spring actuated, fail safe brakes on front and rear wheels.

### TYRES

8 nos.-12 x 24-20 PLY

### BOOM

4 parts boom, 3 parts hydraulically powered & fully synchronized, 4th part power extended & manually pinned for safety

### HOIST

15T hydraulically operated with 6 falls Built in safety brakes

### ELECTRICAL SYSTEM

24V, DC

### DIMENSIONS

Overall Length 10900 mm  
Overall Width 2700 mm  
Overall Height 3300 mm

### OPERATING WEIGHT

Front Axle 9275 kg  
Rear Axle 10200 kg  
Total 19475 kg

### HYDRAULIC SYSTEM

Main Pump Tandem Hydraulic vane pump  
Control valve Main control valve 3 spool double acting with a built in relief & auxiliary valves  
Outrigger Control valve 2 Spool  
Double acting type

### WHEEL TRACK

Front 1960 mm  
Rear 1960 mm

### WHEEL BASE

4880 mm

### TURNING RADIUS

7.85 m

### STANDARD ACCESSORIES

All Weather Cabin with Unrestricted Visibility  
Rear View Camera with LCD  
Equipment Monitoring System (telematics)  
Front Outriggers  
Wheel Guards  
FM Radio and Mobile Charger  
Battery Cut off Switch  
Safe Load Indicator with Hydraulic Cut Off

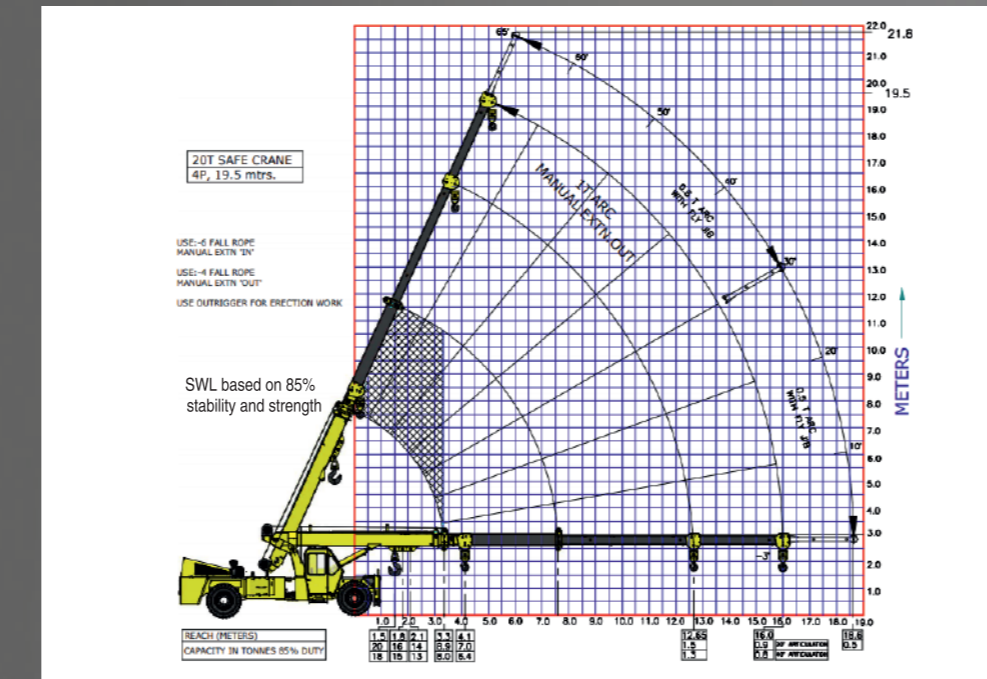
### OPTIONAL ACCESSORIES

Air Conditioned Cabin  
Man Carrying Basket  
Fire Extinguisher  
Fly Jib  
Pilling Application  
Spreader Bar  
Helper Seat Platform

**NOTE** Technical modification reserved. All dimensions & weights are variable within ± 5% over indicated values.

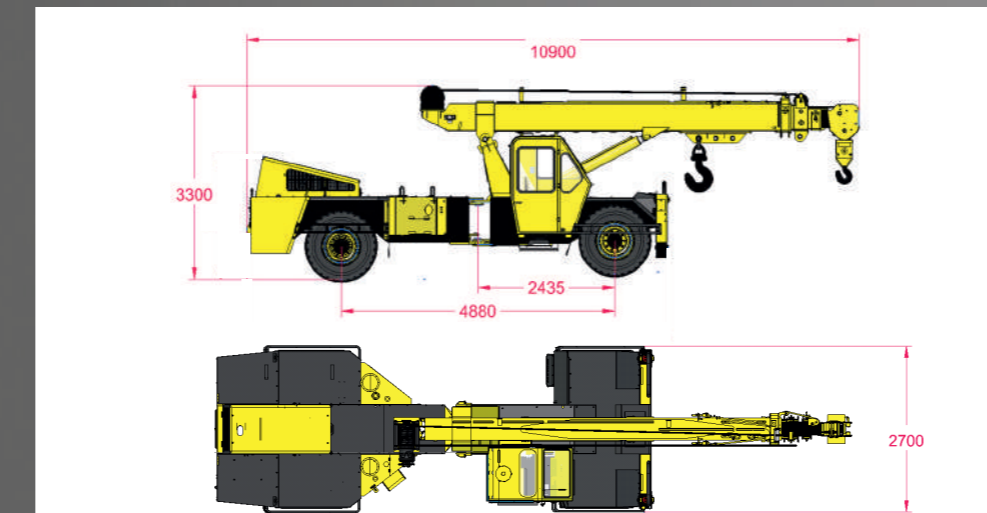
## TECHNICALS

### Load Chart



Rated loads are calculated for operation on leveled surface.

### F2022: DIMENSIONS (Ref.) & AREA OF OPERATION



## Features

- HYDRAULIC CLUTCH**  
Low effort hydro pneumatic clutch to reduce operator fatigue.
- ELECTRONIC ACCELERATOR PEDAL**  
Accelerator Pedal - Low effort electronic accelerator pedal reduce operator fatigue.
- ECU EMS SYSTEM**  
ECU EMS - Electronic Control Unit for Engine Management System for Engine diagnosis and troubleshooting.
- IGNITION ON/OFF**  
Ignition key to switch off engine, no more use of stop cable to engine put off.
- HPCR SYSTEM**  
HPCR - High Pressure Common Rail System - HPCR provide cleaner exhaust, deliver more horsepower and fuel efficiency per displacement.
- ROCKER SWITCHES**  
Rocker Switch with more reliable and better aesthetic appearance, low operator fatigue.
- CLUSTER**  
Single Digital Cluster with all gauges, fault code detection for engine system, date and time display feature, less number of wiring harness.

\*Photo may be change w.r.t actual in equipment

## SAFETY FEATURES

- OUTRIGGER HOME POSITION SENSING SYSTEM (OHPSS)**  
Whenever Outrigger leaves its home position then blow audio alert and indicator arises
- USE OF 1ST & REVERSE GEAR FOR CRANING OPERATION, SPEED ≤ 2 KMPH. AUDIO ALARM WILL BLOW.**
- MANDATORY OUTRIGGER MECHANISM FOR ERECTION JOBS**  
Whenever Boom open more than 10 m & 39 deg., alarm blow for opening Outrigger for safe operation
- RETRACTION OF FORWARD MOVEMENT IN ENGAGED OUTRIGGER CONDITION**  
When Outrigger are in open condition audio alert will blow.
- SAFE MODE OPERATION (NO BYPASSING ALLOWED)**  
Safe Mode Operation while over loading/unsafe condition by restricting lifting load, opening boom and Lift down operation.
- LATERAL & LONGITUDINAL ANGLE SYSTEM**  
(unsafe stability) when machine is working in undulation ground / unsafe stability, Alarm start blowing
- ANTI-TOPPLING SYSTEM**  
Whenever Rear Axle leaves ground in case of undulation/off road Craning operation, buzzer will beep and brake will applied.
- HUMAN PROXIMITY SENSOR**  
Whenever human or any obstructions come near machine, sensors will get activated mounted on front, LH & RH side
- INTEGRATION OF SLI WITH TELEMATICS**  
Calculate safe load or not recommending for overload, (SLI) data available on telematic server and mobile application
- DE- RATED OVERLOAD ARTICULATION**  
Automatic deration of Load values in SLI based on Load chart and physical load lifted.

\*Accessories shown in the picture may not be the part of standard fitment and are subject to change without prior notice.