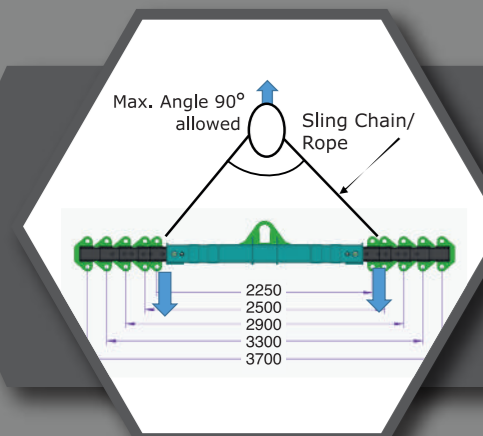


## ACCESSORIES

## SUPPORT NETWORK

### Experience Our Mobile Service Van For Fast And Reliable Solutions



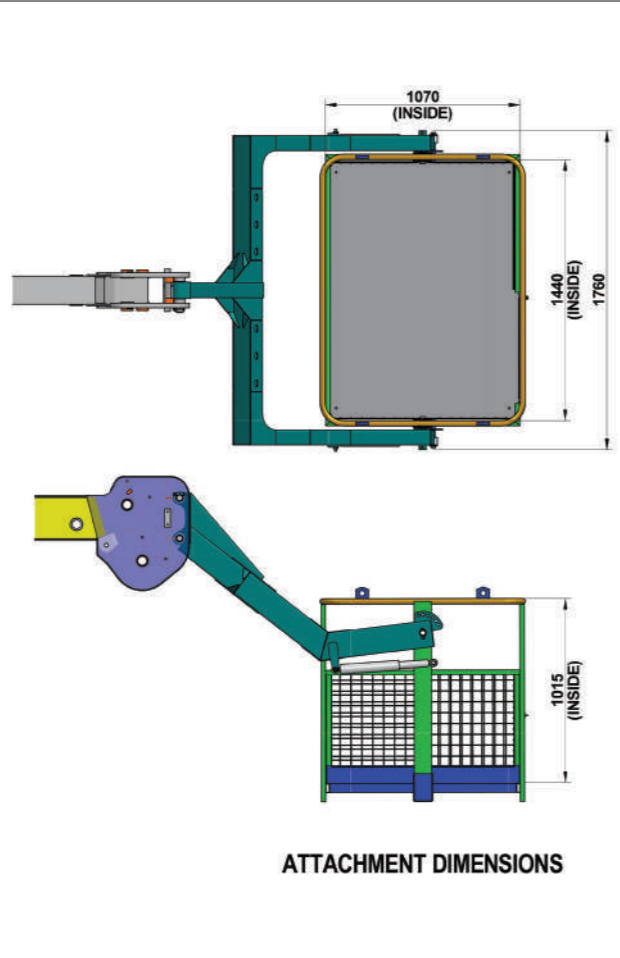
#### SPREADER BAR CUM LIFTING BEAM

Spreader Bar is used to aid crane operators in picking up large and sometimes heavy loads. It increase the stability and handling of load during hoisting and traveling with load.

Lifting Capacity- 2.5 Tonnes to 15 Tonnes (depending on the crane load chart)

Beam Expend Range: 2250 mm to 3700 mm

Note: Attachment view is for ref. only. Physical part may be differ from provided.

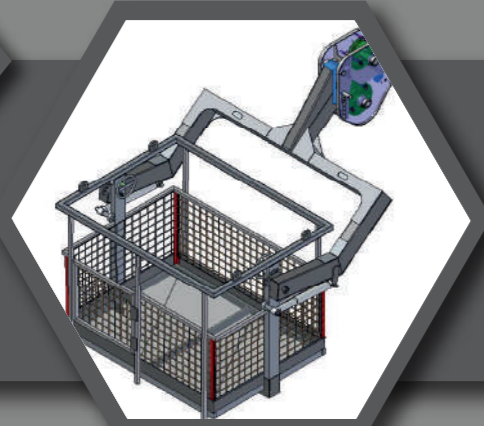


ATTACHMENT DIMENSIONS

#### MAN CARRYING BASKET

ATTACHMENT SPECIFICATION		
ATTACHMENT WEIGHT	KG	240
MAX. CAPACITY	KG	235
NO. OF PERSONS.	N <sup>o</sup>	2
PLATFORM LENGTH	mm	1440
PLATFORM WIDTH	mm	1070

**Intended use**  
The machine has been designed to lift people and handle small tool, max load 235 kg or 2 persons



**BE CAREFUL!**  
When in the firm the same machine is to be used by more than one operator, working instructions as well as the use and maintenance manual must be conveyed to all the operators in charge of the machine.



#### ADDRESS:

**North Zone**  
ESCORTS LTD. - CONSTRUCTION EQUIPMENT  
4<sup>th</sup> Floor 409, Jasola Vihar,  
Elegance Tower, Near Apollo Metro Station,  
New Delhi – 110019

**East Zone**  
ESCORTS LTD. - CONSTRUCTION EQUIPMENT  
Eco Centre, Ambuja Neotia,  
609, 6<sup>th</sup> Floor, EM Block,  
Salt Lake Sector-V, Kolkata – 700091

**West Zone**  
ESCORTS LTD. - CONSTRUCTION EQUIPMENT UNIT 1,  
3<sup>rd</sup> Floor, A-Wing, Times Sqaure,  
Andheri - Kurla Road, Opp. Mittal Industrial Estate,  
Andheri (East), Mumbai – 400059

**South Zone**  
ESCORTS LTD. - CONSTRUCTION EQUIPMENT  
Subham Square, 1<sup>st</sup> Floor, S.No.41/9, 1<sup>st</sup> Main Road,  
Karambakkam, Porur, Chennai – 600116.

MKT/21.1/3012XTR



# WHEN YOU NEED EXTRA 3012 XTR

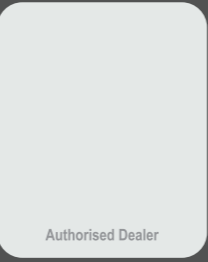
Max. Load Lifting Capacity 30T | Boom Height 12.1m | Creep Speed: 1.3 Km/h  
Equipment Monitoring System | Auto Levelling Hook Block



Customer Support No.:  
**1800 180 4488**  
(Timings: 9.30 am - 6.00 pm, Monday to Friday)

E-mail:  
[ece.marketing@escorts.co.in](mailto:ece.marketing@escorts.co.in)

Escorts Construction Equipment: Plot No. 219, Sector-58, Ballabhgarh- 121004, Faridabad, Haryana (INDIA)  
Tel.: 0129-2306574/2306598/2306571 Fax: 0129-2306572 Website: [www.escortsgroup.com](http://www.escortsgroup.com)



# ESCORTS WHITE LINE

## SPECIFICATIONS

### RATED CAPACITY

30 Tonne at	1.5 m radius
4.8 Tonne at	8.5 m radius
Max Hook Height	12.1 m

### ENGINE (BSIV)

Volvo - Eicher make CEV BS IV Diesel Engine, Model E494TCI - High Pressure Common Rail System (HPCR) Technology, Turbo Charged Water Cooled, ECU Control Engine Management System, Developing 101 Kw/137HP @ 2200 RPM or Equivalent Engine.

### TRANSMISSION & CLUTCH

Drive	"Mechanical - 2WD (Rear Wheel Drive) with Hi/Lo"
Type	VECV: 6F+1R Transmission
Clutch	Dry Friction Plate
Clutch Actuation	Pneumatic Assisted Hydraulic clutch
Speeds	12 forward and 2 reverse
Max Travel Speed	41 kmph
Creep Speed	1.3 kmph
Gradeability	35% (Unladen)

### STEERING

Full Power orbital with twin Hydraulic double acting Cylinders	
Type	Fixed Steering Column
Articulation	Up to 35° on either side
Turning Radius	8.5 m (min)

### CONTROL VALVE

Main Control Valve - Proportional control valve hydraulically actuated through joy stick, 3 spool double acting with a built in relief and auxiliary valves  
Outrigger Control valve - 3 spool manual proportional control valve with built in pressure relief valve

### AXLES

Front	Dead Axle-Rigid Mounting
Rear	TATA Drive Axle- Mounted on Leafspring

### BRAKES

Service	Air operated brakes on rear axle, Pneumatically assisted hydraulic brakes.
Parking	
Rear Wheel	Spring loaded brake, Air-released on rear axle.
Front Wheel	Pneumatically assisted Spring loaded, fail safe hydraulic actuated brakes on front axle.

### TYRES

Front	12 x 24 - 20PR [4 nos.]
Rear	17.5 x 25 - 20PR [2 nos.]

### BOOM

3 Part Boom- Hydraulically Powered & Fully Synchronised	
Luffing Range	-3° to +65°

### HOIST MECHANISM

6 Falls, Hydraulic Winch

### ELECTRICAL SYSTEM

24 V Negative Earth, 130 AH x 2 Battery

### DIMENSIONS

Wheel Base	4800 mm
Overall Length	10475 mm
Overall Width	2870 mm
Overall Height	3100 mm
Front Wheel Track	2500 mm
Rear Wheel Track	2080 mm

### OPERATING WEIGHT TRAVEL WORK (BOLTABLE CWT)

Front Axle Weight	8705	7600
Rear Axle Weight	10050	13700
Total Weight	18755	21300

### CAPACITIES

Fuel Tank	280 litres
Hydraulic Tank	245 litres

### STANDARD ACCESSORIES

Drag Winch - Line pull 2500 kg	Operator Cabin
Rear view mirror	Reflectors
Turn Indicator & Reverse Lamp	Lockable Battery Box
Mobile Charger	Cabin Fan
Tyre Guard	Reverse Parking Camera
Telematics	Tow Hook
Articulation Lock	SLI - Safe Load Indicator

### SAFETY SYSTEM

#### Audio, Visual

- Anti-Toppling System**  
Whenever Rear Axle leaves ground incase of undulation/off road Craning operation
- Outrigger Home Position Sensing**  
Whenever Outrigger leaves its home position
- Human Proximity Sensor**  
Whenever human or any obstructions come near machine- 2 nos side sensor and 2 nos front sensors activate
- Integration of SLI with Telematics**  
SLI data will comes on Telematics server and Mobile application

#### Visual

- De - Rated Overload articulation**  
Automatic deration of Load values in SLI based on Load chart and physical load lifted

#### Audio

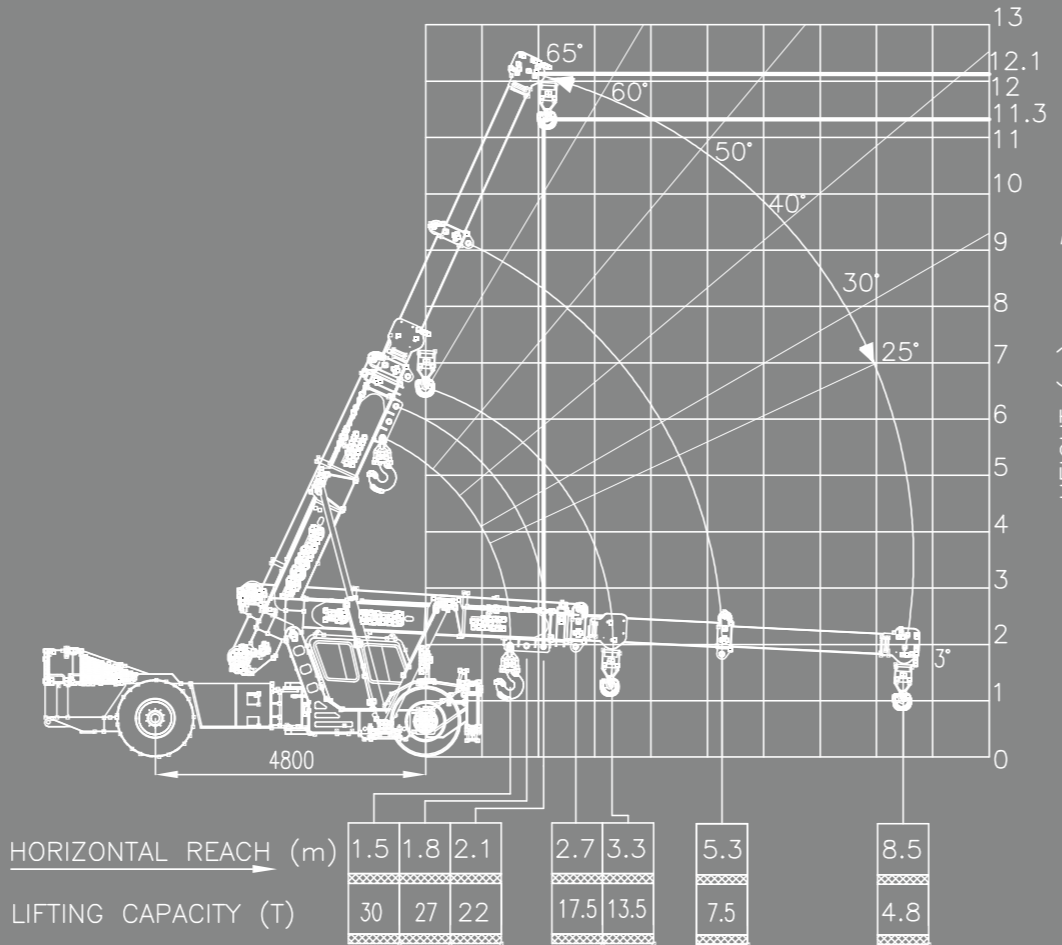
- Chassis Lateral & Longitudinal Angle Sensing**  
Alarm (unsafe stability) when machine is working in undulation ground
- Use of 1st & Reverse Gear for Craning Operation, speed ≤ 2 kmph**
- Use of Outrigger for machine working on max height to avoid toppling of machine**
- Retraction of forward movement of rear wheel drive machine, while working on outriggers**

#### Battery Cut off Switch

Battery Cut off Switch

## TECHNICALS

### Load chart



Rate loads are calculated for operation on leveled surface.

## Features

- HYDRAULIC CLUTCH**  
Low effort hydro pneumatic clutch to reduce operator fatigue.
- ELECTRONIC ACCELERATOR PEDAL**  
Accelerator Pedal - Low effort electronic accelerator pedal reduce operator fatigue.
- ECU EMS SYSTEM**  
ECU EMS - Electronic Control Unit for Engine Management System for Engine diagnosis and troubleshooting.
- IGNITION ON/OFF**  
Ignition key to switch off engine, no more use of stop cable to engine put off.
- HPCR SYSTEM**  
HPCR - High Pressure Common Rail System - HPCR provide cleaner exhaust, deliver more horsepower and fuel efficiency per displacement.
- ROCKER SWITCHES**  
Rocker Switch with more reliable and better aesthetic appearance, low operator fatigue.
- CLUSTER**  
Single Digital Cluster with all gauges, fault code detection for engine system, date and time display feature, less number of wiring harness.

## SAFETY FEATURES

- OUTRIGGER HOME POSITION SENSING SYSTEM (OHPSS)**  
Whenever Outrigger leaves its home position then blow audio alert and indicator arises
- USE OF 1ST & REVERSE GEAR FOR CRANING OPERATION, SPEED ≤ 2 KMPH. AUDIO ALARM WILL BLOW.**
- MANDATORY OUTRIGGER MECHANISM FOR ERECTION JOBS**  
Whenever Boom open more than 10 m & 39 deg., alarm blow for opening Outrigger for safe operation
- RETRACTION OF FORWARD MOVEMENT IN ENGAGED OUTRIGGER CONDITION**  
When Outrigger are in open condition audio alert will blow.
- SAFE MODE OPERATION (NO BYPASSING ALLOWED)**  
Safe Mode Operation while over loading/unsafe condition by restricting lifting load, opening boom and Lift down operation.
- LATERAL & LONGITUDINAL ANGLE SYSTEM**  
(unsafe stability) when machine is working in undulation ground / unsafe stability, Alarm start blowing
- ANTI-TOPPLING SYSTEM**  
Whenever Rear Axle leaves ground in case of undulation/off road Craning operation, buzzer will beep and brake will applied.
- HUMAN PROXIMITY SENSOR**  
Whenever human or any obstructions come near machine, sensors will get activated mounted on front, LH & RH side
- INTEGRATION OF SLI WITH TELEMATICS**  
Calculate safe load or not recommending for overload, (SLI) data available on telematic server and mobile application
- DE- RATED OVERLOAD ARTICULATION**  
Automatic deration of Load values in SLI based on Load chart and physical load lifted.

**NOTE** Technical modification reserved. All dimensions & weights are variable within ± 5% over indicated values.