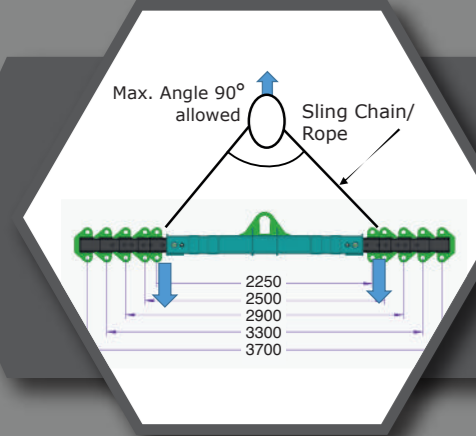


ACCESSORIES



SPREADER BAR CUM LIFTING BEAM

Spreader Bar is used to aid crane operators in picking up large and sometimes heavy loads. It increase the stability and handling of load during hoisting and traveling with load.

Lifting Capacity- 2.5 Tonnes to 15 Tonnes (depending on the crane load chart)

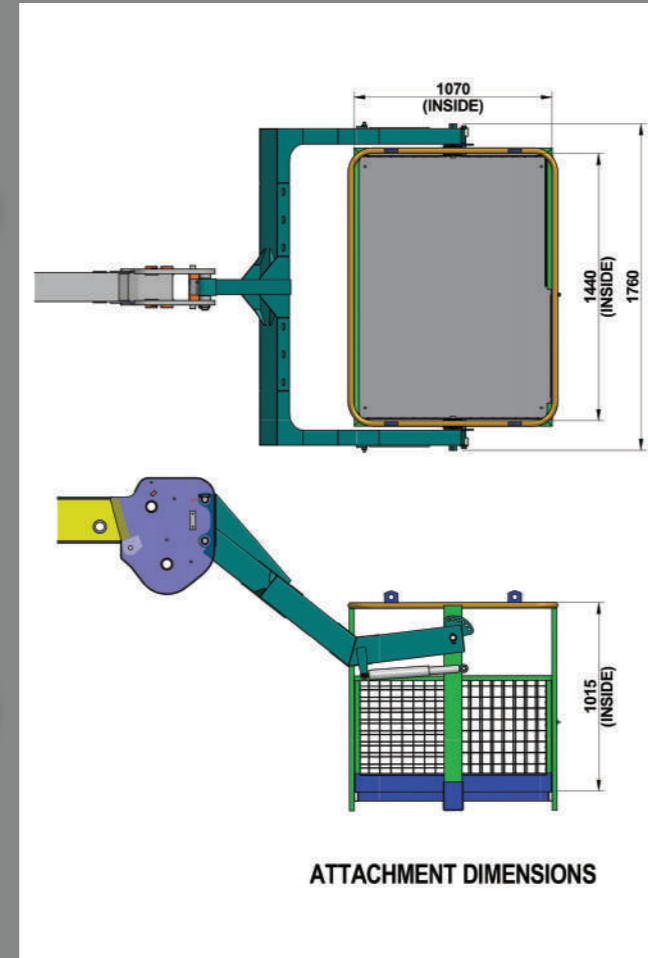
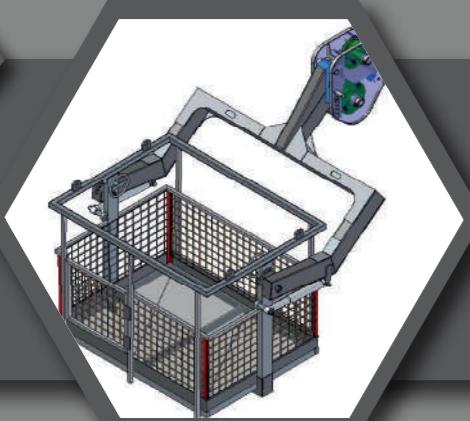
Beam Expend Range: 2250 mm to 3700 mm

Note: Attachment view is for ref. only. Physical part may be differ from provided.

MAN CARRYING BASKET

ATTACHMENT SPECIFICATION		
ATTACHMENT WEIGHT	KG	240
MAX. CAPACITY	KG	235
NO. OF PERSONS.	N ^o	2
PLATFORM LENGTH	mm	1440
PLATFORM WIDTH	mm	1070

Intended use
The machine has been designed to lift people and handle small tool, max load 235 kg or 2 persons



ATTACHMENT DIMENSIONS

SUPPORT NETWORK

Experience Our Mobile Service Van For Fast And Reliable Solutions



ADDRESS:

North Zone
ESCORTS LTD. - CONSTRUCTION EQUIPMENT
4th Floor 409, Jasola Vihar,
Elegance Tower, Near Apollo Metro Station,
New Delhi – 110019

East Zone
ESCORTS LTD. - CONSTRUCTION EQUIPMENT
Eco Centre, Ambuja Neotia,
609, 6th Floor, EM Block,
Salt Lake Sector-V, Kolkata – 700091

West Zone
ESCORTS LTD. - CONSTRUCTION EQUIPMENT UNIT 1,
3rd Floor, A-Wing, Times Sqaure,
Andheri - Kurla Road, Opp. Mittal Industrial Estate,
Andheri (East), Mumbai – 400059

South Zone
ESCORTS LTD. - CONSTRUCTION EQUIPMENT
Subham Square, 1st Floor, S.No.41/9, 1st Main Road,
Karambakkam, Porur, Chennai – 600116.

MKT/21.1/2322

WHEN YOU NEED EXTRA F 2322



4WD as Standard Feature | Pneumatic Assisted Hydraulic Clutch | Creep Speed: 1.3 Km/h
Equipment Monitoring System | Auto Levelling Hook Block



BE CAREFUL!

When in the firm the same machine is to be used by more than one operator, working instructions as well as the use and maintenance manual must be conveyed to all the operators in charge of the machine.



Customer Support No.:
1800 180 4488
(Timings: 9.30 am - 6.00 pm, Monday to Friday)

E-mail:
ece.marketing@escorts.co.in

Escorts Construction Equipment: Plot No. 219, Sector-58, Ballabhgarh- 121004, Faridabad, Haryana (INDIA)
Tel.: 0129-2306574/2306598/2306571 Fax: 0129-2306572 Website: www.escortsgroup.com



GET IT ON
Google Play

Download Customer App for more details



Authorised Dealer

ESCORTS WHITE LINE

SPECIFICATIONS

RATED CAPACITY

23 Tonne at	1.5 m radius
900 kg at	16.6 m radius
Max Hook Height	22.3 m

ENGINE (BS IV)

Volvo – Eicher make CEV BS IV Diesel Engine, Model E494TCI, High Pressure Common Rail System (HPCR) Technology, Turbo Charged Water Cooled, ECU Control Engine Management System, Developing 74Kw/101 HP @ 2200 RPM or Equivalent Engine

TRANSMISSION & CLUTCH

Engine is coupled with Synchronesh Transmission Gear Box and Auxiliary Gear Box with high/low & 2WD/4WD mode selector

Clutch	Single, dry type friction clutch plate (self adjusting)
Clutch Actuation	Pneumatic Assisted Hydraulic clutch
Speeds	10 forward and 2 reverse
Max Travel Speed	40 Kmph
Creep Speed	1.3 Kmph
Gradeability	40% unladen

STEERING

Fully power orbital with twin hydraulic double acting rams Type Articulated power steering, through steering wheel.

Articulation	Up to 35° on either side
Turning Radius	7.85 m

CONTROL VALVE

Main Pump	Tandem Hydraulic vane pump
Control valve	Main control valve 3 spool double acting with a built in relief & auxiliary valves
Outrigger Control valve	2 spool double acting type
Drag Winch Control valve	Single spool double acting

AXLES

Front	Rigidly Mounted
Rear	Mounted with two semi-elliptical springs
Make	TATA

BRAKES

Service	Fully air operated 'S' cam dual circuit brakes on front & rear axles
Parking	Air operated, spring actuated fail safe brakes on rear axle

TYRES

Front	12 x 24 - 20 PR [4 Nos.]
Rear	12 x 24 - 20 PR [4 Nos.]

BOOM

4 Parts Slotted Boom with 3 parts hydraulically powered & fully synchronized, 4th part power extended and manually pinned for safety Luffing Range -3° to + 65°

HOIST MECHANISM

Hydraulically operated with 6 falls built in safety brakes. Self-adjusting snatch block with 13 mm dia rope

ELECTRICAL SYSTEM

24 V, DC, Negative Earth
75 AH Battery x 2 nos.

DIMENSIONS

Wheel Base	4880 mm
Overall Length	10900 mm
Overall Width	2700 mm
Overall Height	3300 mm
Front Wheel Track	1960 mm
Rear Wheel Track	1960 mm

OPERATING WEIGHT TRAVEL WORK (BCW)

Front Axle Weight	9230 Kg	8900 Kg
Rear Axle Weight	10130 Kg	13050 Kg
Total Weight	19360 Kg	21950 Kg

CAPACITIES

Fuel Tank	270 ltrs.
Hydraulic tank	185 ltrs.

STANDARD ACCESSORIES

Operator Cabin	Mobile Charger
Concealed Lockable battery	Tyre Guard
Rear View Camera	Helper Seat Platform
Safe Load Indicator	Drag Winch
Fly Jib	EMS

OPTIONAL ACCESSORIES

RHINO Hook
Fire Extinguisher

SAFETY SYSTEM

Audio, Visual

- Anti-Topping System**
Whenever Rear Axle leaves ground incase of undulation/off road Craning operation
- Outrigger Home Position Sensing**
Whenever Outrigger leaves its home position
- Human Proximity Sensor**
Whenever human or any obstructions come near machine- 2 nos side sensor and 2 nos front sensors activate
- Integration of SLI with Telematics**
SLI data will comes on Telematics server and Mobile application

Visual

- Automatic deration of Load values in SLI based on Load chart and physical load lifted
- Safe mode operation

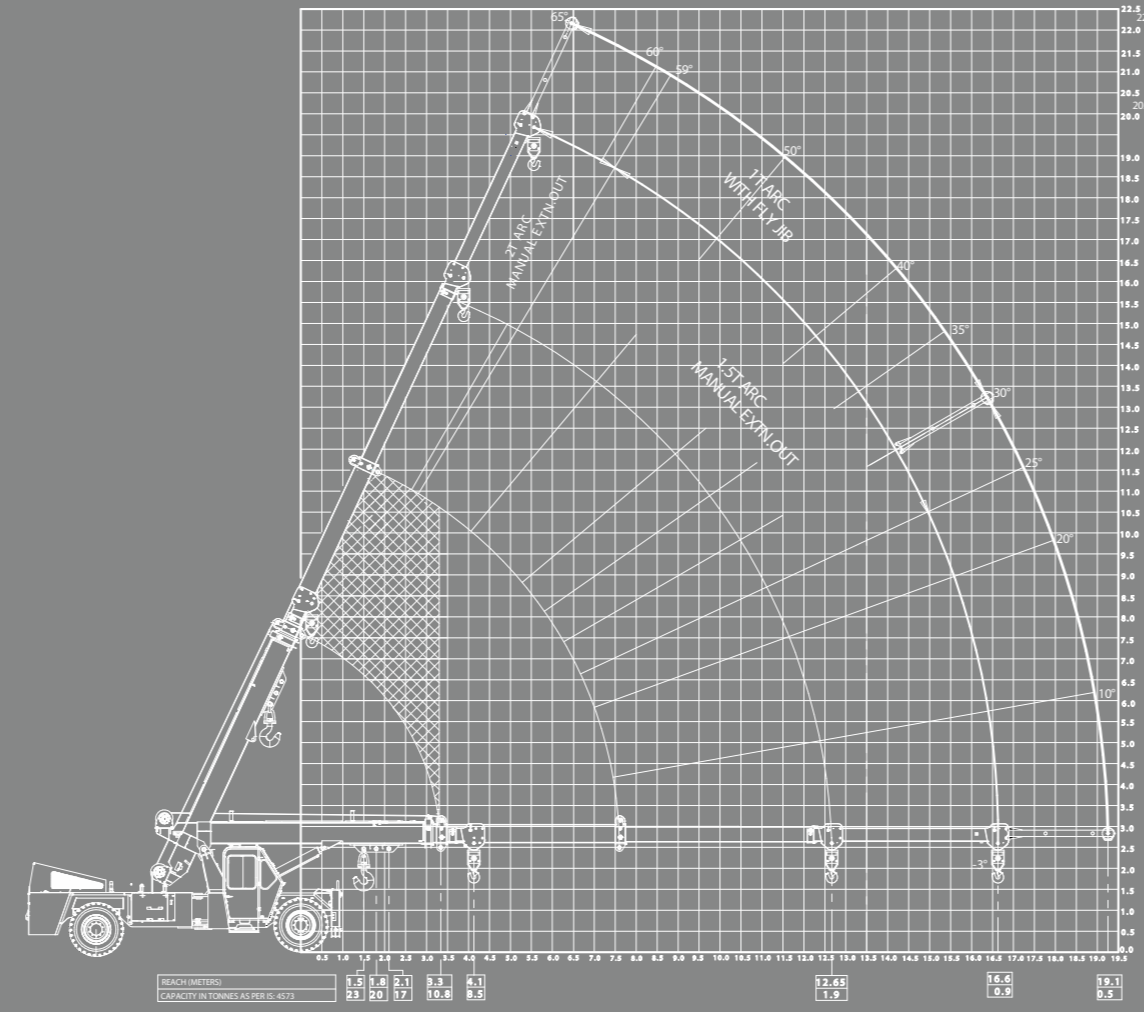
Audio

- Chassis Lateral & Longitudinal Angle Sensing**
Alarm (unsafe stability) when machine is working in undulation ground
- Use of 1st & Reverse Gear for Craning Operation, speed ≤ 2 kmph**
- Use of Outrigger for machine working on max height to avoid toppling of machine**
- Retraction of forward movement of rear wheel drive machine, while working on outriggers**

Battery Cut off Switch

TECHNICALS

Load Chart



Features

- HYDRAULIC CLUTCH**
Low effort hydro pneumatic clutch to reduce operator fatigue.
- ELECTRONIC ACCELERATOR PEDAL**
Accelerator Pedal - Low effort electronic accelerator pedal reduce operator fatigue.
- ECU EMS SYSTEM**
ECU EMS – Electronic Control Unit for Engine Management System for Engine diagnosis and troubleshooting.
- IGNITION ON/ OFF**
Ignition key to switch off engine, no more use of stop cable to engine put off.
- HPCR SYSTEM**
HPCR – High Pressure Common Rail System - HPCR provide cleaner exhaust, deliver more horsepower and fuel efficiency per displacement.
- ROCKER SWITCHES**
Rocker Switch with more reliable and better aesthetic appearance, low operator fatigue.
- CLUSTER**
Single Digital Cluster with all gauges, fault code detection for engine system, date and time display feature, less number of wiring harness.

SAFETY FEATURES

- OUTRIGGER HOME POSITION SENSING SYSTEM (OHPS)**
Whenever Outrigger leaves its home position then blow audio alert and indicator arises
- USE OF 1ST & REVERSE GEAR FOR CRANING OPERATION, SPEED ≤ 2 KMPH. AUDIO ALARM WILL BLOW.**
- MANDATORY OUTRIGGER MECHANISM FOR ERECTION JOBS**
Whenever Boom open more than 10 m & 39 deg., alarm blow for opening Outrigger for safe operation
- RETRACTION OF FORWARD MOVEMENT IN ENGAGED OUTRIGGER CONDITION**
When Outrigger are in open condition audio alert will blow.
- SAFE MODE OPERATION (NO BYPASSING ALLOWED)**
Safe Mode Operation while over loading/unsafe condition by restricting lifting load, opening boom and Lift down operation.
- LATERAL & LONGITUDINAL ANGLE SYSTEM**
(unsafe stability) when machine is working in undulation ground / unsafe stability, Alarm start blowing
- ANTI-TOPPLING SYSTEM**
Whenever Rear Axle leaves ground in case of undulation/off road Craning operation, buzzer will beep and brake will applied.
- HUMAN PROXIMITY SENSOR**
Whenever human or any obstructions come near machine, sensors will get activated mounted on front, LH & RH side
- INTEGRATION OF SLI WITH TELEMATICS**
Calculate safe load or not recommending for overload. (SLI data available on telematic server and mobile application)

NOTE Technical modification reserved. All dimensions & weights are variable within ± 5% over indicated values.