

## SUPPORT NETWORK

### Experience Our Mobile Service Van For Fast And Reliable Solutions



#### ADDRESS:

**North Zone**  
ESCORTS LTD. - CONSTRUCTION EQUIPMENT  
4<sup>th</sup> Floor 409, Jasola Vihar,  
Elegance Tower, Near Apollo Metro Station,  
New Delhi – 110019

**East Zone**  
ESCORTS LTD. - CONSTRUCTION EQUIPMENT  
Eco Centre, Ambuja Neotia,  
609, 6<sup>th</sup> Floor, EM Block,  
Salt Lake Sector-V, Kolkata – 700091

**West Zone**  
ESCORTS LTD. - CONSTRUCTION EQUIPMENT UNIT 1,  
3<sup>rd</sup> Floor, A-Wing, Times Square,  
Andheri - Kurla Road, Opp. Mittal Industrial Estate,  
Andheri (East), Mumbai – 400059

**South Zone**  
ESCORTS LTD. - CONSTRUCTION EQUIPMENT  
Subham Square, 1<sup>st</sup> Floor, S.No.41/9, 1<sup>st</sup> Main Road,  
Karambakkam, Porur, Chennai – 600116.

MKT/21.1/NXT 1313

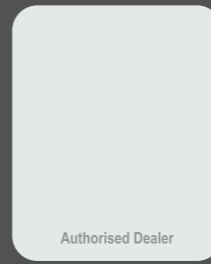
## WHEN YOU NEED EXTRA NXT 1313



Front Outriggers | Low Creep Speed - 1.9 Km/h | Fail Safe Pneumatic Brakes  
Short Turning Radius | 500 Hours Engine Service Interval



GET IT ON  
Google Play  
Download Customer App  
for more details



Authorised Dealer

# ESCORTS WHITE LINE

Customer Support No.:  
**1800 180 4488**  
(Timings: 9.30 am - 6.00 pm, Monday to Friday)

E-mail:  
[ece.marketing@escorts.co.in](mailto:ece.marketing@escorts.co.in)

Escorts Construction Equipment: Plot No. 219, Sector-58, Ballabhgarh- 121004, Faridabad, Haryana (INDIA)  
Tel.: 0129-2306574/2306598/2306571 Fax: 0129-2306572 Website: [www.escortsgroup.com](http://www.escortsgroup.com)

# SPECIFICATIONS

## RATED CAPACITY

13 Tonne at	1.5 m radius
1.5 T at	10 m radius
Max Hook Height	13 m

## ENGINE

Diesel engine of Escorts make, model AE4.312C-3A, water cooled, developing 49.5HP @ 2200 ERPM

## TRANSMISSION & CLUTCH

Drive	2WD
Type	8+2 Constant Mesh Transmission
Clutch	Single, Dry type friction clutch plate
Speeds	8 forward and 2 reverse
Max Travel Speed	29 kmph
Creep Speed	1.9 Kmph
Gradeability	22%

## STEERING

Type	Fixed type, Fully Powered orbitrol with twin Hydraulic double acting cylinders
Articulation	Up 45° on either side
Turning Radius	6.3 m

## CONTROL VALVE

5 spool control valve with built in pressure relief valve and precision control.

## AXLES

Front	Rigid Box Type Dead Axle
Rear	Robust Straight Axle

**STRUCTURE** Frames and boom are fabricated with high tensile steel plates, sections and with proven technology.

**OPERATOR'S CAB & CONTROLS** Operator cabin with steel construction, excellent visibility for craning operation, adjustable seat, automotive type controls like steering wheel, brakes, accelerator pedal, gear shifting etc.

**NOTE** Technical modification reserved. All dimensions & weights are variable within ± 5% over indicated values.

## BRAKES

Front Wheel	Pneumatic assisted hydraulic brakes
Rear Wheel	Disc brakes actuated through a slave cylinder
Parking	Hand control valve operated, Air assisted Hydraulic Parking brakes at rear wheels (Standard models) Hand control valve operated, Air assisted Parking brakes at Front wheels (with Air brake models)

## TYRES

Front	10 x 20 - 16PR [4 Nos.]
Rear	14 x 24 - 16PR [2 Nos.]

## BOOM

Telescoping, 3 Part Slotted boom, box type hydraulically operated, through Double acting Jacks & rope compensation  
Luffing Range -3° to 62°

## HOIST MECHANISM

4 Falls , Hydraulic Winch (Capacity 10T ) with 13 mm dia rope

## ELECTRICAL SYSTEM

12 V Negative Earth, 75 AH x Single Battery

## DIMENSIONS

Wheel Base	4350 mm
Overall Length	11400 mm
Overall Width	2550 mm
Overall Height	2850 mm
Front Wheel Track	1930 mm
Rear Wheel Track	1680 mm

## OPERATING WEIGHT

Front Axle Weight	5040 Kg
Rear Axle Weight	8620 Kg
Total Weight	13660 Kg

## CAPACITIES

Fuel Tank	90 ltrs.
Hydraulic tank	90 ltrs.

## SAFETY SYSTEM

- Safe Mode Operation
- Outrigger Home Position Sensing
- Chassis Lateral & Longitudinal angle sensor
- Human Proximity Sensor
- Use of 1st & Reverse Gear for Craning Operation, speed ≤ 2 kmph
- Use of Outrigger for machine working on max height to avoid toppling of machine
- Retraction of forward movement of rear wheel drive machine, while working on outriggers
- Integration of SLI with Telematics

## STANDARD ACCESSORIES

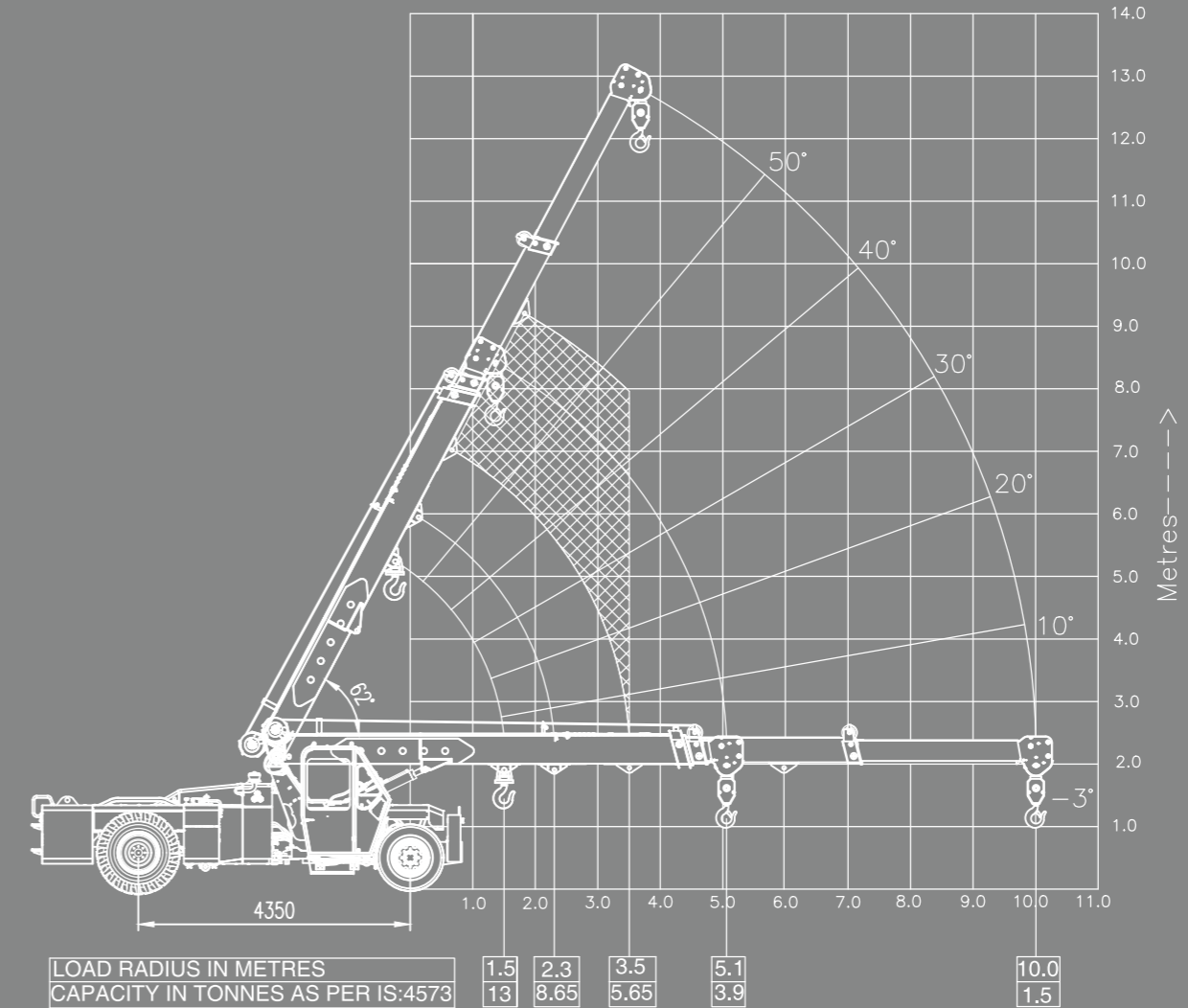
- Helper Seat
- Operator Cabin
- Rear view mirror
- Reflectors
- Turn & Reverse lamp
- Concealed Lockable battery

## OPTIONAL ACCESSORIES

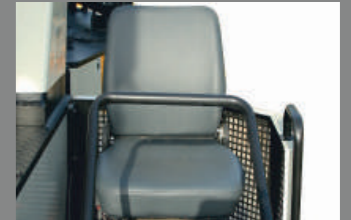
- Safe Load Indicator
- Reverse Parking System
- Telematic & Stereo System
- Fly Jib
- HD Tyres
- Mobile Charger
- Cabin Fan
- Air Brake

# TECHNICALS

## LOAD CHART - NXT 1313



Rate loads are calculated for operation on leveled surface.



Helper Seat

Low Resolution



Front Cabin : Better Visibility



SLI – Safe Load Indicator



Pneumatic Brakes

Low Resolution